

RALLY

BY MELANIE TUAZON



ISSUE

01

MQG MODERN CLASSICS

Jan, Feb, Mar 2020

MODERN CLASSICS

presented by THE MODERN QUILT GUILD®

PATTERN

Melanie Tuazon
North Jersey MQG

QUILT

Stephanie Jacobson
Omaha MQG

TECHNICAL EDITOR

Yvonne Fuchs
Individual Member

PHOTOGRAPHY

Leah Muse
Photographer

**Thank you to
our friends at
Moda for the
fabric for this
quilt!**



INTRODUCTION

In celebration of our 10th anniversary, we present the MQG Modern Classics. This quarterly collection is a selection of a few of our past favorites from the Quilt of the Month series, which started in 2015. With new colors, new arrangements, new possibilities, MQG members can find the full patterns and resources at themqg.org/resources.

ABOUT

The Modern Quilt Guild's mission is to support and encourage the growth and development of modern quilting through art, education and community. Copyright © 2020 by Melanie Tuazon and the Modern Quilt Guild. All rights reserved. This pattern may not be reproduced, sold, commercialized or distributed in any manner whatsoever without the express written permission of Melanie Tuazon and the Modern Quilt Guild.

CONTACT US

Address

The Modern Quilt Guild
4470 W Sunset Blvd #226
Los Angeles, CA 90027

Contact

themodernquiltguild.com
[instagram.com/themqg](https://www.instagram.com/themqg)
[facebook.com/themqg](https://www.facebook.com/themqg)
info@themodernquiltguild.com



ABOUT MELANIE TUAZON

Melanie Tuazon is a quilter and fiber artist whose process includes a spectrum of improvisation. She enjoys incorporating planned and unplanned design elements and techniques, and repeatedly uses curves, skinny piecing, and occasional handwork. Much of her work explores how modern domesticity, feminism and identity intersect within the context of quilt tradition. Before she started quilting in 2011 she was a journalist who

wrote about creative people for trade magazines. After becoming a mother she was drawn to her own creative practice and the modern quilting community. She was president of the North Jersey MQG from 2013 to 2015. Her quilts have shown and won ribbons at QuiltCon, where she also taught in 2018 and 2019. Her work can be found online at @melintheattic and melintheattic.com.



—
FINISHED SIZE

59" X 65"

SKILL LEVEL

BEGINNER

"I'd love to see your Rally quilt!

Tag me on Instagram

@melintheattic, and use

#rallyqotm when you share.

*I can't wait to see what you do
with it!" —Melanie Tuazon*

ABOUT THE QUILT

Rally is about the experience of being a member of a community. Individuals join together to make a group, and in turn, the group helps them to define their individuality. The quilt uses an improvisational technique to make blocks that are unique and wonky, but when assembled as a quilt top, they form a cohesive graphic shape. This is a quilt for anyone who wants to try guided improv or play with skinny strips to make wonky arrows. For variation, switch up the colors or use a scrappy background. The important thing is to let go of precision and have fun.



MATERIALS

- 4¼ yards Background fabric (Mustard)
- 1¼ yards Angles fabric (Nautical Blue)
- 1 FQ or strip 1½" x 20" Accent angle fabric (Capri)
- Backing: 3¾ yards
- Binding: ⅝ yard
- Batting: 63" x 70"



Materials used for this quilt include: Moda Bella Solids in Mustard (9900-213), Nautical Blue (9900-236), and Capri (9900-225) Warm & White Batting by the Warm Company



Note: "Angle fabrics can be cut as you piece, or you can cut them all at once. One strip will piece 2-4 blocks, but this varies because blocks are personalized."
—Melanie Tuazon

GENERAL INSTRUCTIONS

Read through all instruction before beginning.

Measurements include ¼" seam allowances.

Width of fabric (WOF) is assumed to be 40".

For efficiency, cut the largest units first from the WOF strips.

CUTTING INSTRUCTIONS

From the background fabric (Mustard), cut:

- 11 strips 8" x WOF. Subcut:
 - 54 squares 8" x 8".
- 7 strips 7" x WOF. Subcut:
 - 3 rectangles 7" x 26½". Label "A"
 - 4 rectangles 7" x 20". Label "B"
 - 4 rectangles 7" x 13½". Label "C"
 - 4 squares 7" x 7". Label "D"

From the Angle fabric (Nautical Blue), cut:

- 20-22 strips 1½" x WOF.
 - Subcut during block assembly.

From the accent angle fabric (Capri), cut:

- 1 strip 1½" x 20".

From the binding fabric), cut:

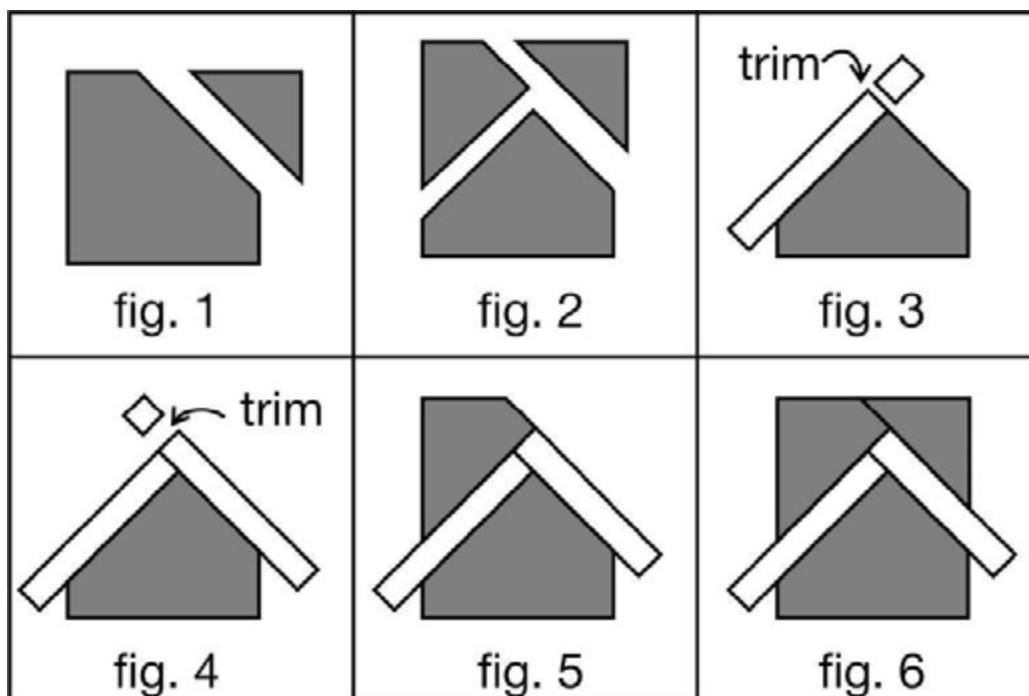
- 7 strips 2½" x WOF.

NOTE:

This is guided improvisation, and will result in a different and unique block each time. Exact measurements are not used. Experimentation is encouraged. I used a rotary cutter and rulers when piecing the angles, but you can opt to use scissors or omit rulers for a much more organic look and feel. I recommend using rulers to square blocks up after the angles are pieced.

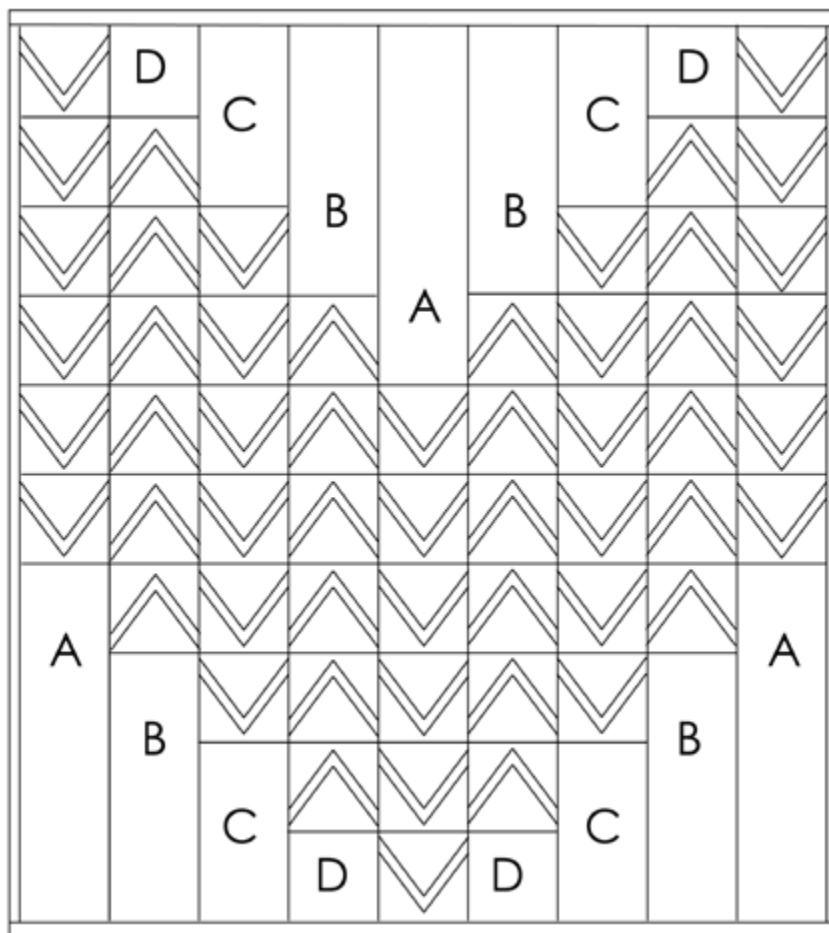
SEWING INSTRUCTIONS

1. Starting 1-2 inches from the bottom right corner of your block, cut a diagonal line up and through the top of the block. (fig. 1)
2. Repeat for the left side. Cut up through the top from left to right, but do not cut through the triangle made from your first cut. (fig. 2) NOTE: Keep track of your two triangles and their orientation-- you'll need them again soon.
3. Starting on the left side, sew a strip to the background fabric. Press toward the dark fabric. (Finger pressing will work fine.) Trim any part of the strip that hangs over the center angle, using the side that is unsewn as your guide. (fig. 3)
4. Sew a strip to the right side of the angle. Press toward dark fabric. Trim excess. (fig. 4)
5. Sew top left triangle, aligning the edges closest to the angle's peak. Press. (fig. 5) NOTE: Do not worry about perfection! Not all edges will or should line up.
6. Sew top right triangle. Press. (fig. 6)
7. Trim block to 7" square. NOTE: So that it doesn't get lost in the seam allowance during assembly, be sure that your angle's point is at least $\frac{1}{4}$ " from the top edge of the block.



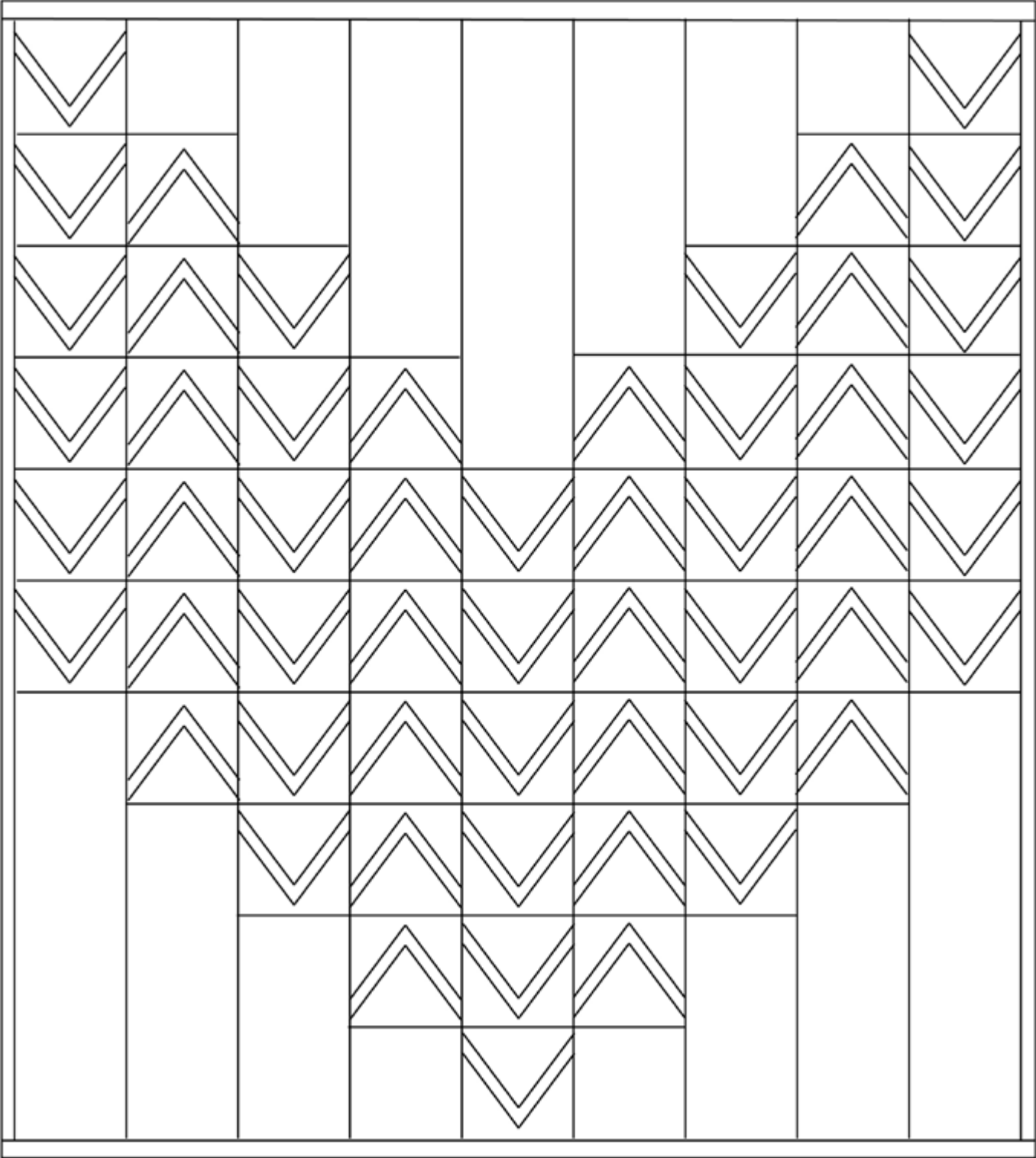
FINAL TOP CONSTRUCTION

1. Arrange your angle blocks in nine columns of six blocks each, alternating directions of the arrows and deciding on the position of your accent angle. The center column should point down. Number each column 1-9 from left to right.
2. Sew angle blocks together. Press.
3. Use the Quilt Assembly Diagram to arrange background pieces. Sew a background fabric piece A to rows 1, 5, and 9. For rows 1 and 9, sew to the pointed side of the angle blocks column. For row 5, sew to the open end. Press.
4. For rows 2 and 8, sew a background piece D to each pointed side of your block column and a B to each open side. Press.
5. For rows 3 and 7, sew a C to each end. Press.
6. For rows 4 and 6, sew a B to the pointed side and a D to the open side. Press.
7. Sew columns together. Congratulations, your top is done!



Quilt Assembly Diagram

COLORING DIAGRAM





FINISHING INSTRUCTIONS

1. Divide the backing into two pieces 67" x 40", remove selvages, and sew backing pieces together along the trimmed selvage edges using a $\frac{1}{2}$ " seam allowance. Press the seam open.
2. Layer backing, batting and quilt top; baste. Quilt as desired.
3. Join seven $2\frac{1}{2}$ " x WOF binding strips together using your preferred joining technique to create a double folded binding roll. Trim quilt square and bind using your favorite binding technique.

a b o v e

PHOTOGRAPHER :

LEAH MUSE



Lucky Cuff Quilt

*designed by Dorie Blaisdell
made by Kristen Lee*



Rally Quilt

*designed by Melanie Tuazon
made by Stephanie Jacobson*

*Visit the Modern Monthly website
to get all these and more.*

modernmonthly.com

*Patterns & resources are available
to MQG members for only \$30
per year. We kindly ask that you
encourage your non-member
friends to join instead of sharing
this PDF.*

themqg.org/join



Snapped Quilt

*designed by Riane Menardi Morrison
made by Julie Burton*

ABOUT THIS PATTERN

The Modern Quilt Guild's mission is to support and encourage the growth and development of modern quilting through art, education and community.

Copyright © 2020 by Melanie Tuazon and the MQG. All rights reserved. This pattern may not be reproduced, sold, commercialized or distributed in any manner whatsoever without the express written permission of Melanie Tuazon and the MQG.

